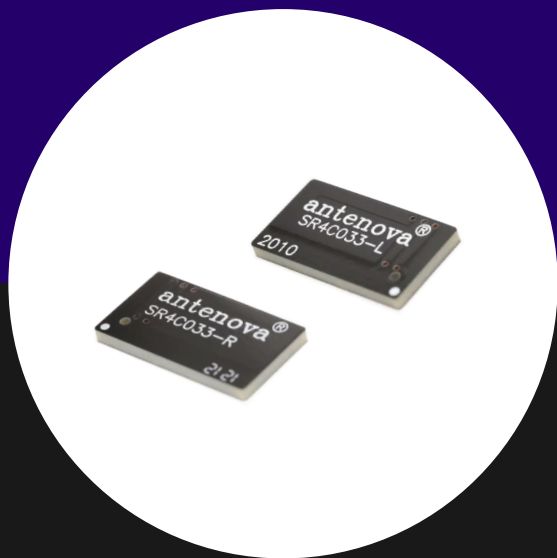


DATASHEET

Latona

SR4C033-L • SR4C033-R • lamiiANT®



Features

- Antenna for LP-WAN applications. Including NB-IOT, LoRa, SigFox, ISM and Weightless-P
- Frequency bands from 791- 960MHz
- Maintains high performance on device: DFI (Designed for Integration)
- Corner placement to save space
- Low profile innovative design.
- SMD mounting
- Supplied on Tape and Reel
- Automotive temperature rating.

1. Description

Latona uses a ground plane on the host PCB to radiate effectively. The antenna itself requires a clearance underneath. An external matching circuit is used to optimise the antenna within a device to the required bands. Designed specifically for LP-WAN applications that require a small robust solution. Latona comes in Left and Right hand versions to optimise placement.

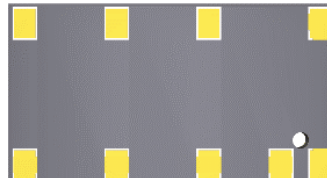
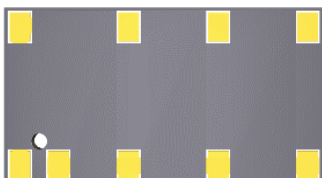
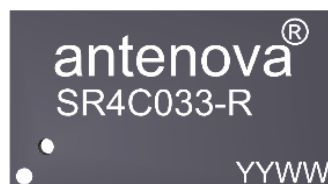
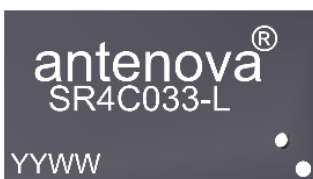
2. Applications

- Remote monitoring/ Smart meters
- Network Devices
- Smart Buildings
- Smart cities
- Manufacturing automation
- Agriculture/Environment
- Consumer tracking

3. Part number

Latona left
SR4C033-L

Latona right
SR4C033-R



4. General data

Frequency	791 – 960MHz
Polarization	Linear
Operating temperature	-40°C to 140°C
Environmental condition test	ISO16750-4 5.1.1.1/5.1.2.1/5.3.2
Impedance with matching	50 Ω
Weight	<2g
Antenna type	SMD
Dimensions	20.0 x 11.0 x 1.6 (mm)

5. RF characteristics

	791 – 862 MHz	824 – 960 MHz
Peak gain	0.5dBi	0.8dBi
Average gain (Linear)	-1.50dBi	-1.50dBi
Average efficiency	>60%	>65%
Maximum return loss	-9dB	-7dB
Maximum VSWR	2.1:1	2.6:1

All data measured on Antenova's evaluation PCB Part NO. SR4C033-EVB-1

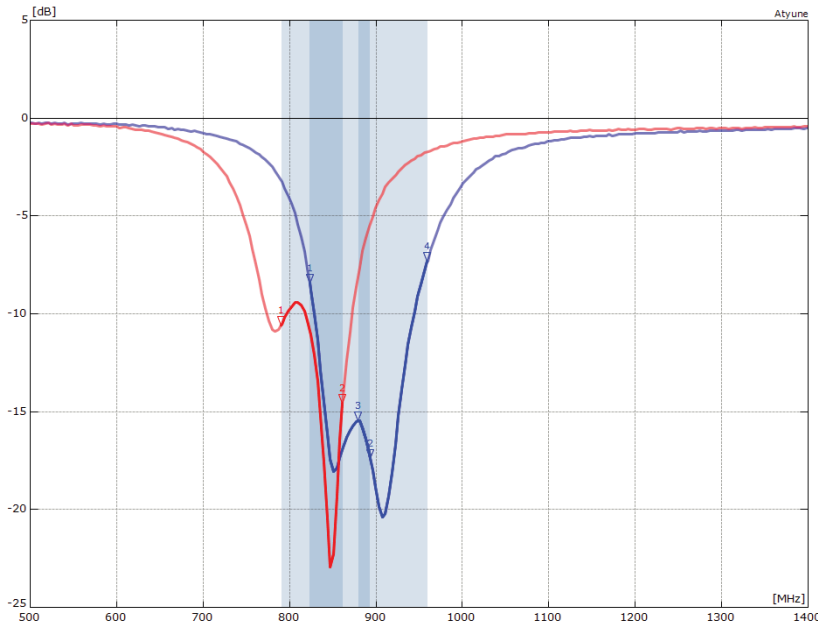
6. RF performance

The performance is shown for two tuned variants (Tuning dependant on required band). Matching circuit is used for band selection.

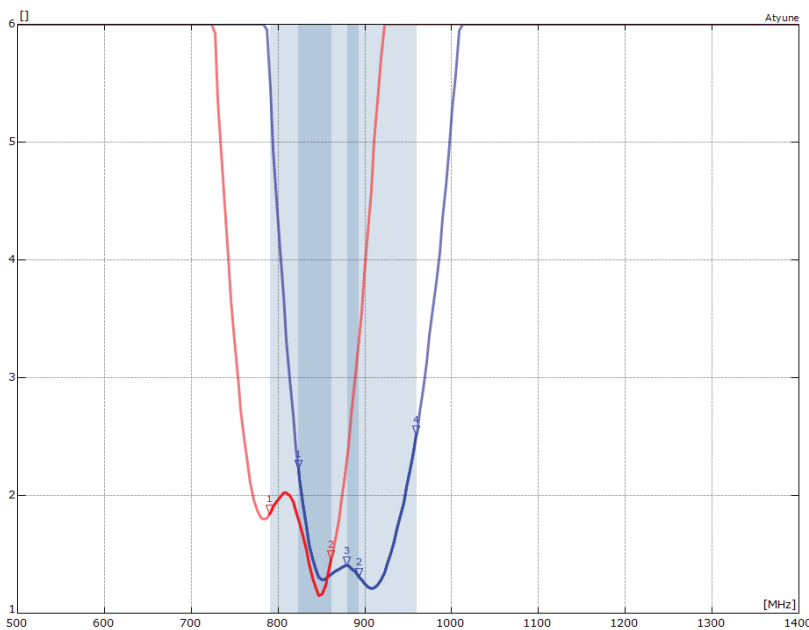
B20: 791 – 862MHz

B5 and B8: 824–894MHz; 880– 960MHz

6.1. Return loss

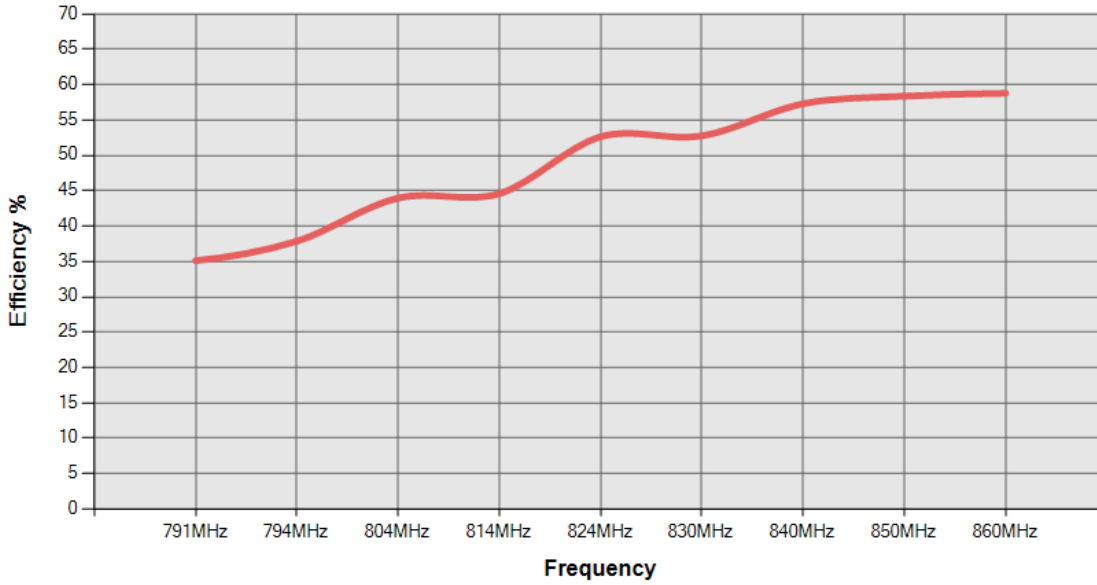


6.2. VSWR

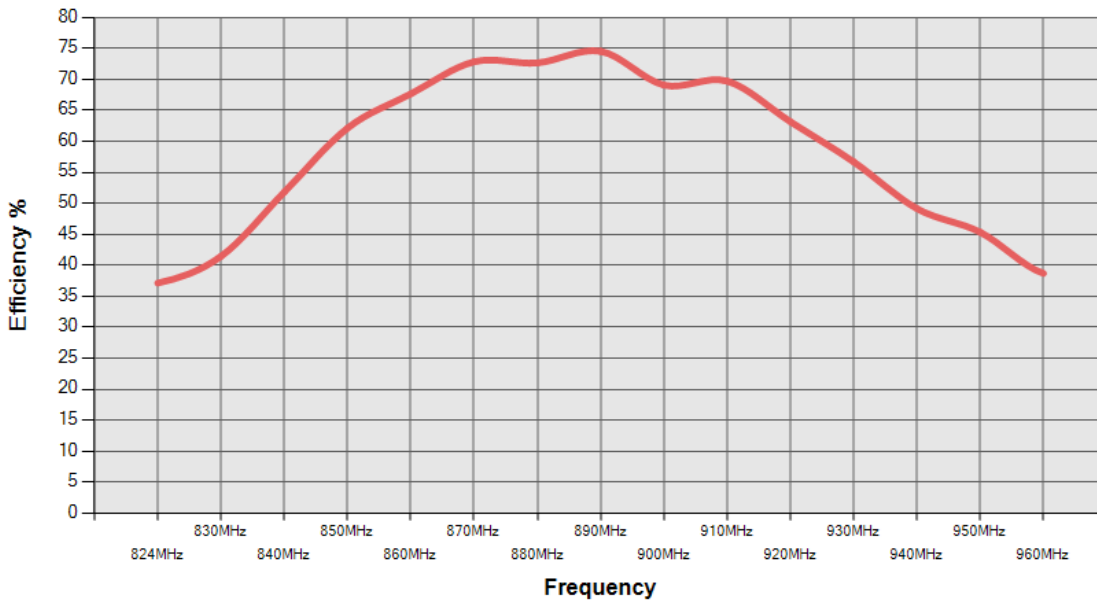


6.3. Efficiency

791-862MHz



824-960MHz

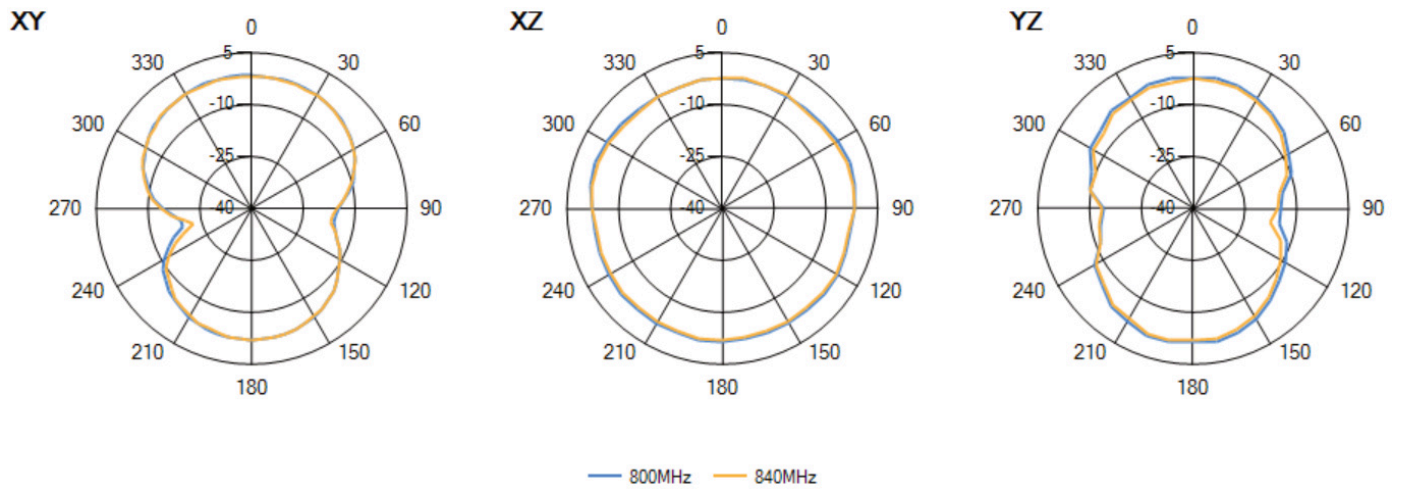
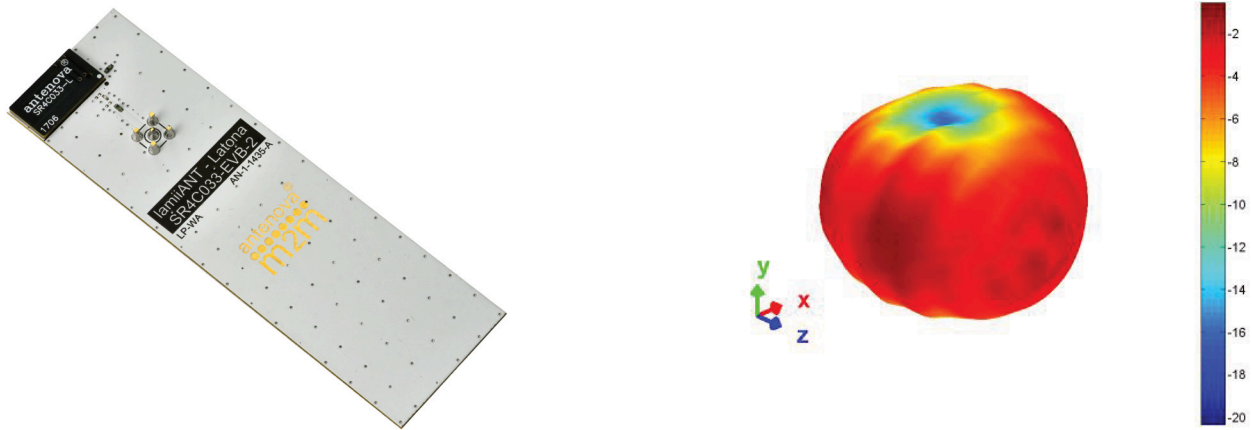


All data measured on Antenna's evaluation PCB Part NO. SR4C033-EVB-1

6.4. Antenna pattern

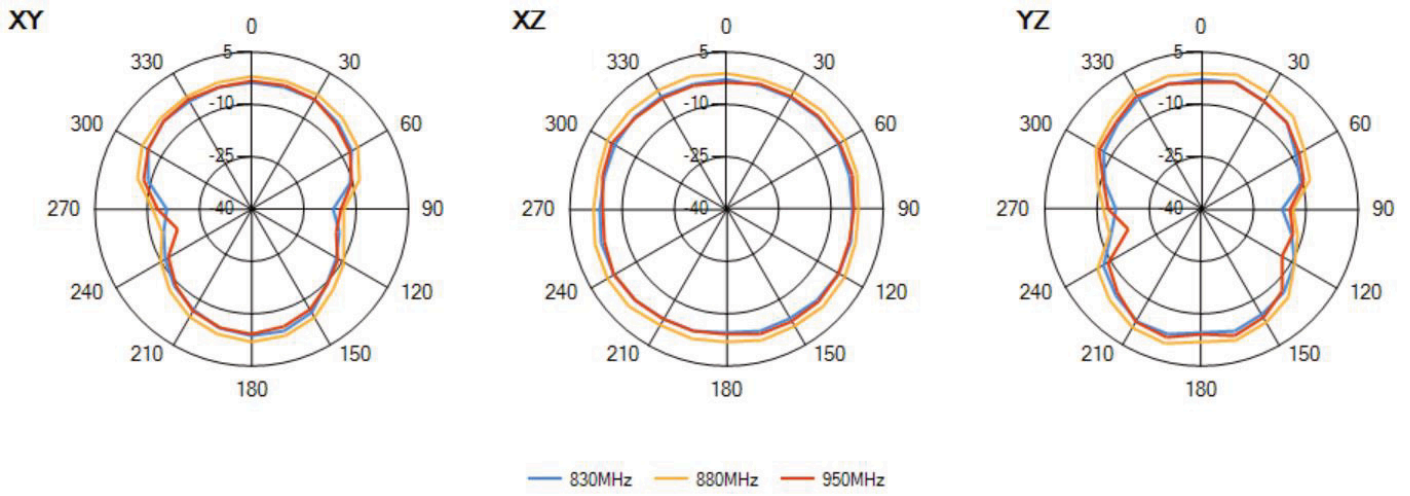
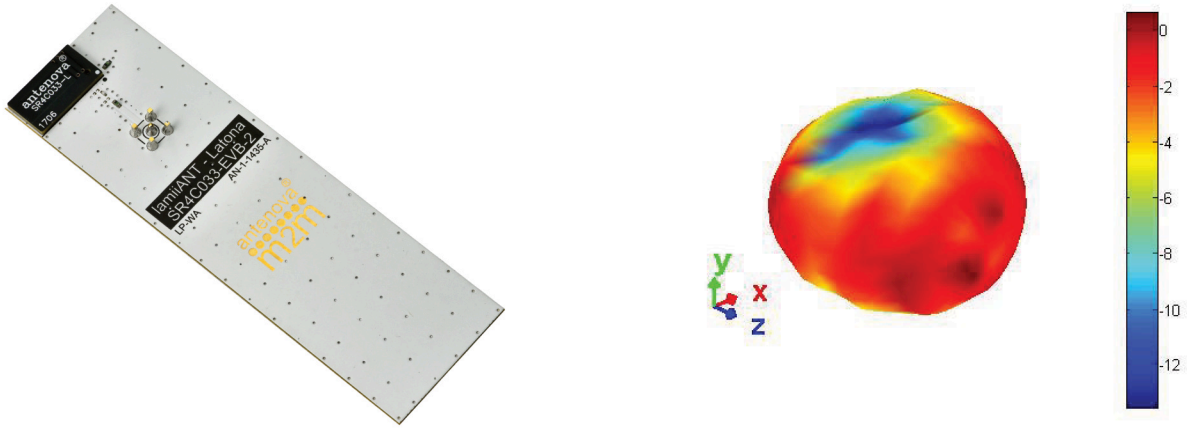
6.4.1. 791 - 862 MHz

3D pattern at 830MHz



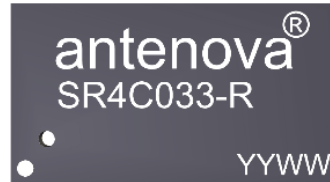
6.4.2. 824 - 960 MHz

3D pattern at 880 MHz



7. Antenna dimensions

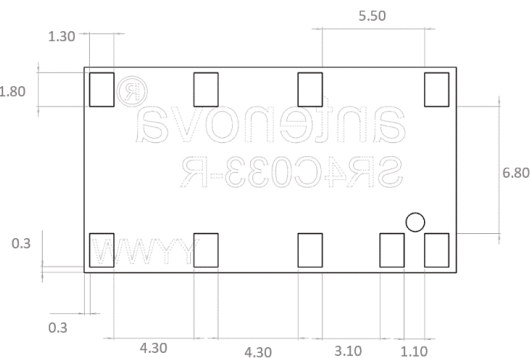
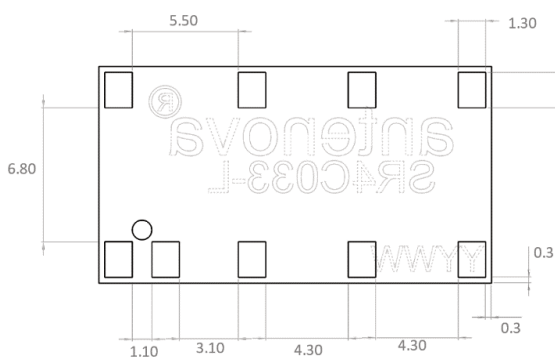
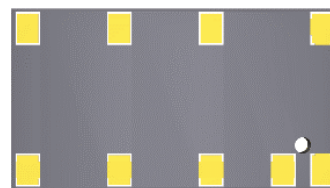
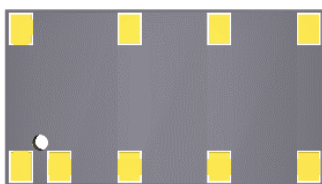
Top view



L	W	H
Length	Weight	Height
20.0 ±0.1	11.0 ±0.1	1.6 +0.1

All dimensions in (mm)

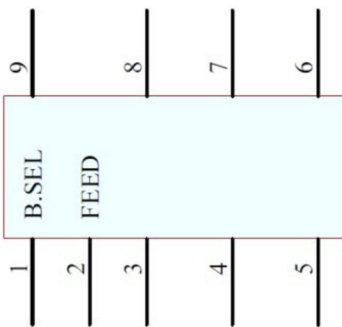
Bottom view



8. Schematic symbol and pin definition

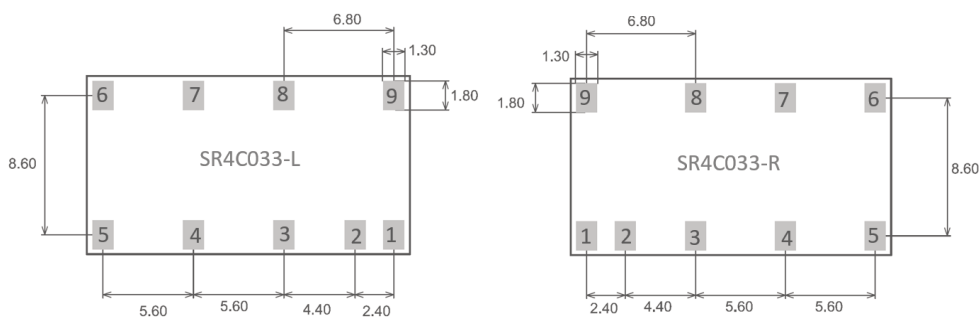
The circuit symbol for the antenna is shown below. The antenna has 9 pins with only 2 as functional. All other pins are for mechanical strength.

Pin	Description
2	Feed
1	Band Select (B.SEL)
3,4,5,6,7,8,9	Not used (Mechanical only)



9. Host PCB footprint

The recommended host PCB footprint is below.



Copper pads all 1.8 x 1.3 (mm)

All Dimensions in mm

10. Electrical interface

10.1. Transmission line

All transmission lines should be designed to have a characteristic impedance of 50Ω .

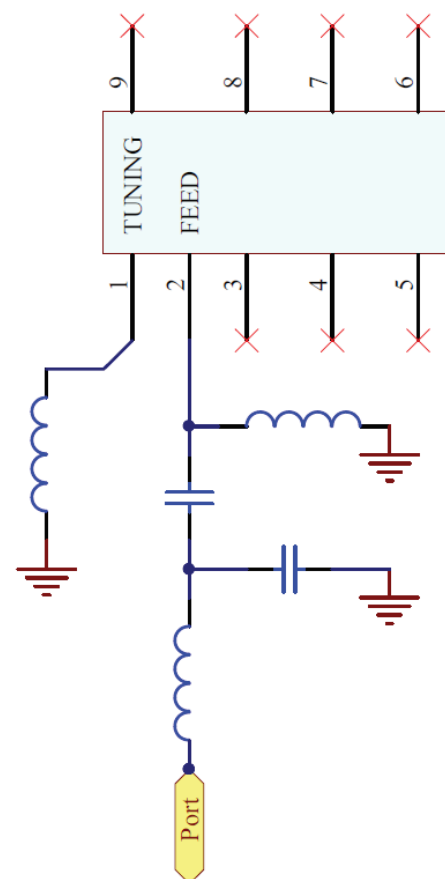
- The length of each transmission lines should be kept to a minimum
- All other parts of the RF system like transceivers, power amplifiers, etc, should also be designed to have a 50Ω impedance

A co-planar transmission line can be designed using an online transmission line calculator tool, see TOOL at <https://www.antenova.com/>.

The PCB thickness, copper thickness and substrate dielectric constant are entered, then the tool calculates the transmission line width and gaps on either side of the track to give a 50Ω impedance.

10.2. Matching circuit

The antenna requires a matching circuit that must be optimized for each product. The matching circuit will require up to four components and the following circuit should be designed into the host PCB. Not all components may be required but should be included as a precaution. The matching network should be placed close to the antenna feed to ensure it is optionally effective in tuning the antenna.

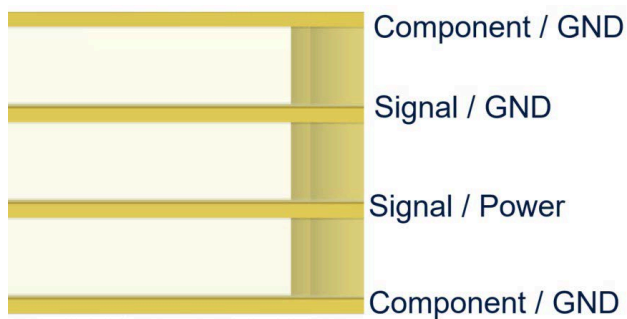


11. Antenna integration guide

We recommend the following during the design phase to maximise antenna performance and minimize noise:

- Minimum 4 layer PCB
- Route signals and power internally where possible
- Flood all layers with ground
- Knit ground on all layers together with plenty of vias

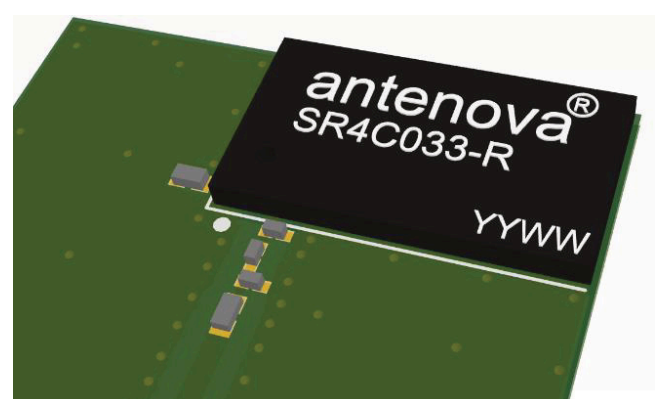
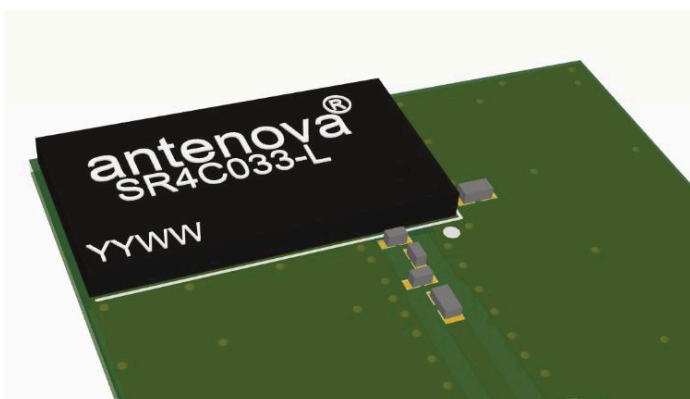
Follow placement guidance carefully. Antenova provide technical support to help you with your design, and also provide design assistance on PTCRB certification. Register for an account on <https://ask.antenova.com/> to access technical support.



11.1. Antenna placement

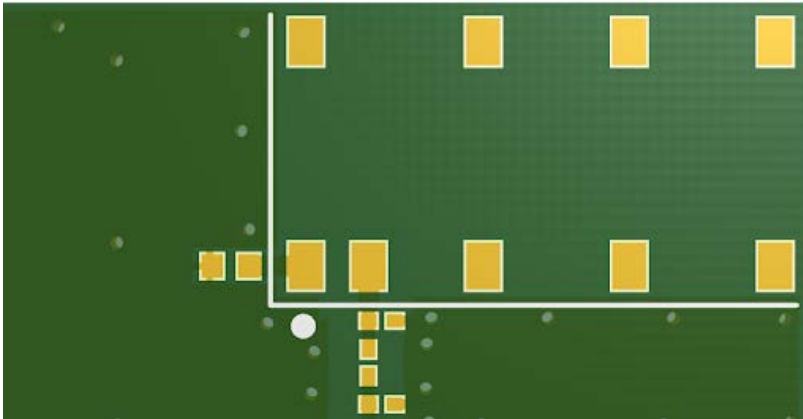
Whatever the size of the host PCB, the antenna should be placed ideally on the host PCB's shortest side in the corner. The antenna should be placed in the corresponding corner: SR4C033-L (Left corner) and SR4C033-R (Right Corner).

The Antenova placement tool can be used to advise on antenna placement, see TOOL at <https://www.antenova.com/>



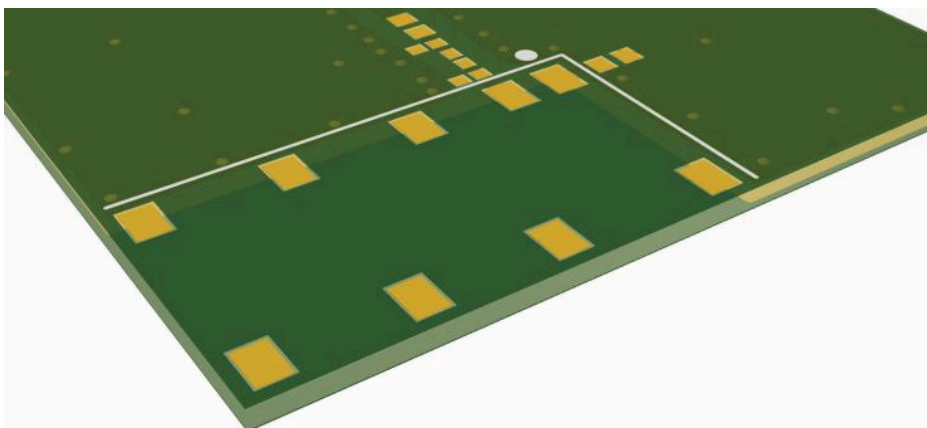
11.2. Host PCB layout

The design for the host PCB must ensure that the footprint and clearance meets the antenna specification. An example of the PCB layout shows the antenna footprint with clearance. The feed (Pin 2) connects to the matching circuit close to the antenna. For Pin 1 (B.SEL) the component should be close to this pin.

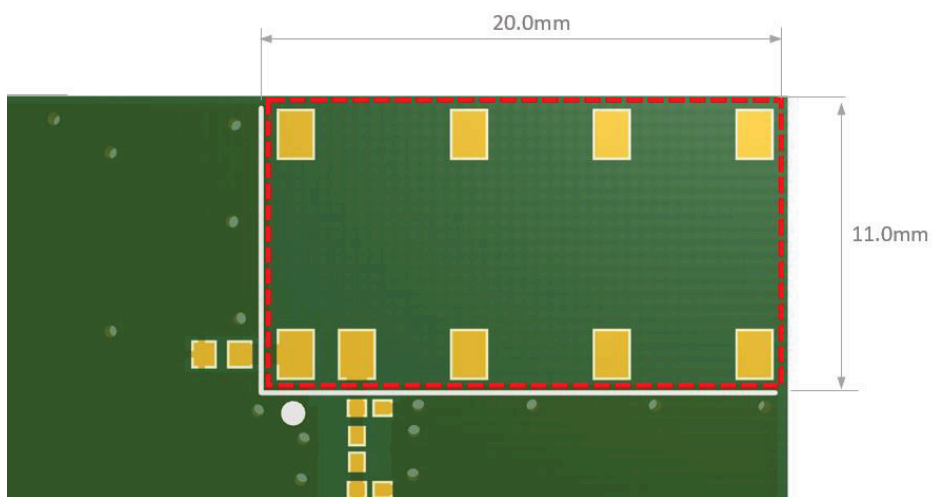
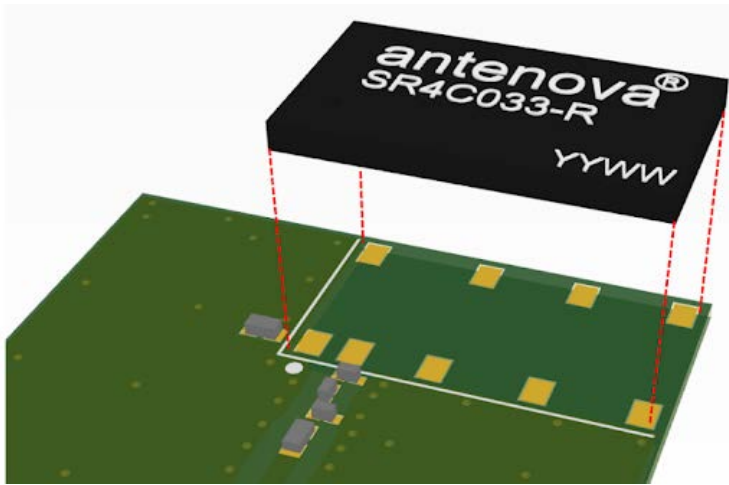


11.3. Host PCB clearance

Below shows the antenna footprint and clearance through all layers on the PCB. Only the antenna pads and connections to feed and GND are present within this clearance area. The clearance area required is 20.0 x 11.0 (mm).



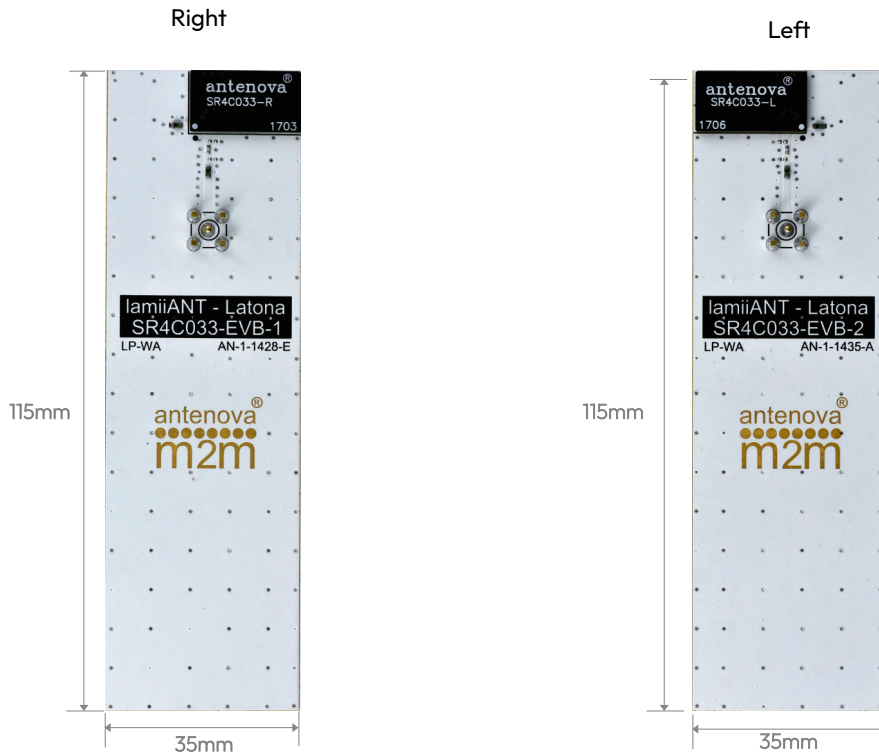
The clear-out area is simply defined as the same size as the antenna. No additional clearance is required.



12. Reference board

To order a reference board please see antenna.com

Part number : SR4C033-EVB-1 for SR4C033-R (Right) and SR4C033-EVB-2 for SR4C033-L (Left)

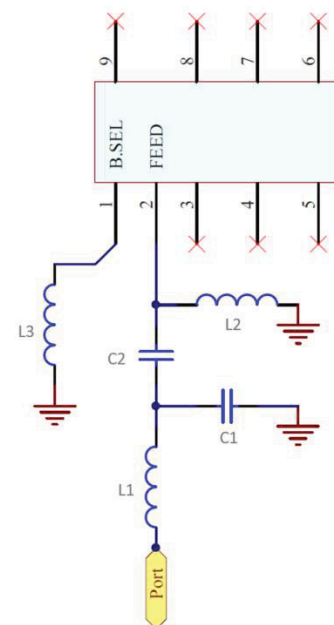


12.1. Reference board matching circuit

Designator	Type	Value	Description
L1	Inductor	33nH	Murata LQG15HN series
L2	Not fitted	Not fitted	Not Fitted
C1	Not fitted	Not fitted	Not Fitted
C2	Capacitor	0.5pF	Murata GRM15 series

B. SEL (Band selection pin component)				
Frequency band	Designator	Type	Value	Description
B20	L3	Inductor	6.8nH	Murata LQG15 series
B5, B8	L3	Inductor	3.3nH	Murata LQG15 series

Band 20 = 791-862MHz
 Band 8 = 880-960MHz
 Band 5 = 824-894MHz



13. Soldering

This antenna is suitable for lead free soldering. The reflow profile should be adjusted to suit the device, oven and solder paste, while observing the following conditions:

- For leaded soldering, the maximum temperature should not exceed 240 °C.
- For lead free soldering, a maximum temperature of 255 °C for no more than 20 seconds is permitted.
- The antenna should not be exposed to temperatures exceeding 120 °C more than 3 times during the soldering process.

14. Hazardous material regulation conformance

The antenna has been tested to conform to RoHS and REACH requirements. A certificate of conformance is available from Antenova's website.

15. Packaging

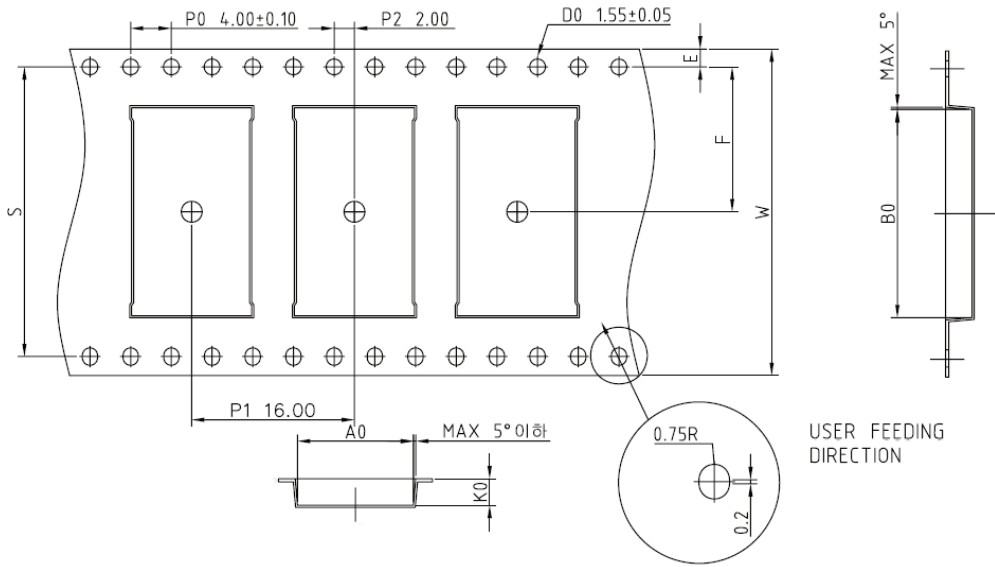
15.1. Optimal storage conditions

Temperature	-10°C to 40°C
Humidity	Less than 75% RH
Shelf life	24 Months
Storage place	Away from corrosive gas and direct sunlight
Packaging	Reels should be stored in unopened sealed manufacturer's plastic packaging.

Note: Storage of open reels of antennas is not recommended due to possible oxidization of pads on antennas. If short term storage is necessary, then it is highly recommended that the bag containing the antenna reel is re-sealed and stored in conditions as described in the table above.

The shelf life of the antenna is 2 years provided the factory seal on the package has not been broken.

15.2. Tape characteristics

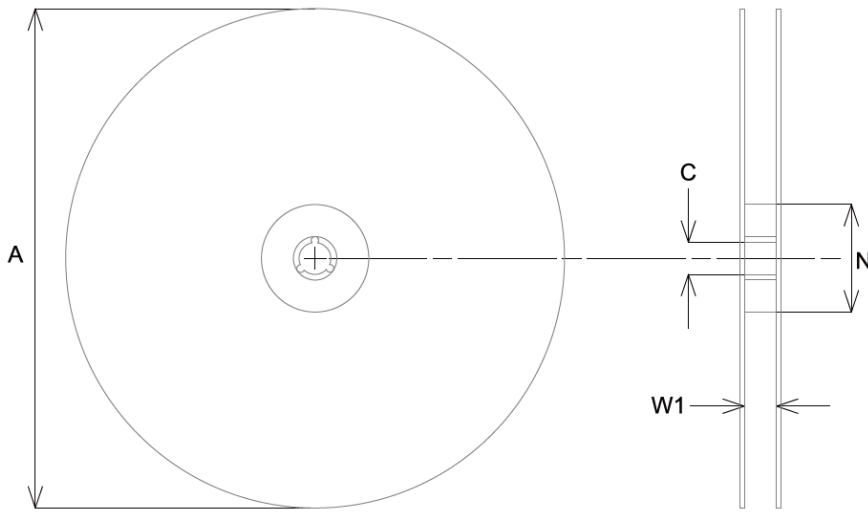


Ko	Ao	Bo	PO	P1	P2
2.80	11.40 ± 0.1	20.40 ± 0.1	4.00 ± 0.1	16.00 ± 0.1	2.00 ± 0.1

E	F	W
1.75 ± 0.1	14.2 ± 0.15	32.00 ± 0.3

All dimensions in (mm)

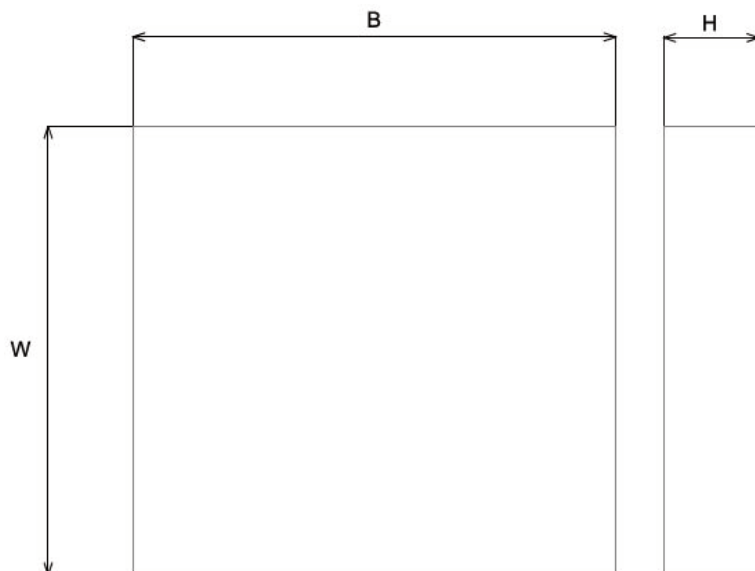
15.3. Reel dimensions



A	C	N	W1
330.0 ± 0.2	13.0 + 0.5/-0.2	80.0 ± 0.2	32.4 + 2/-0

All dimensions in (mm)

15.4. Box dimensions



Width (W)	Breadth (B)	Thickness (H)
340mm	355mm	45mm

15.5. Bag properties

Reels are supplied in protective plastic packaging.

15.6. Reel label information

Antenova Limited **antenova**
 www.antenova.com
 DESCRIPTION: LATONA RIGHT 
 PART NUMBER: SR4C033-R 
 QTY: 1,000 pcs 
 DATE CODE: YYWW 

  **lamiiANT®**

Antenova Limited **antenova**
 www.antenova.com
 DESCRIPTION: LATONA LEFT 
 PART NUMBER: SR4C033-L 
 QTY: 1,000 pcs 
 DATE CODE: YYWW 

  **lamiiANT®**

Quality statements

Antenova’s products conform to REACH and RoHS legislation. For our statements regarding these and other quality standards, please see antenova.com.

Antenova reserves all rights to the contents of this document. Antenova gives no warranties based solely on the accuracy or completeness of the contents of this document and reserves the right to make changes to the specifications of the products described herein at any time and without notice.



Datasheet version

2.01 release 10th June 2026

Antenna design, integration and test resources

Product designers – the details contained in this datasheet will help you to complete your embedded antenna design. Please follow our technical advice carefully to obtain optimum antenna performance.

We aim to support our customers to create high performance wireless products. You will find a wealth of design resources, calculators and case studies to aid your design on our website.

Antenova's design laboratories are equipped with the latest antenna design tools and test chambers. We provide antenna design, test and technical integration services to help you complete your design and obtain the required certifications.

If you cannot find the antenna you require in our product range, please contact us to discuss creating a custom antenna to meet your exact requirements.

Share knowledge with RF Experts around the world

ask.antenova is a global forum for designers and engineers working with wireless technology

[Visit Ask.Antenova](#)

Visit [antenova.com](#)

Order antenna samples and evaluation boards, and read our antenna resources

[Visit antenova.com](#)

Request a volume quotation for antennas:

sales@antenova.com

+ 44 (0) 23 9400 1023

Global headquarters

**Antenova Ltd, 7 The Briars,
Waterberry Drive, Waterlooville,
Hampshire, PO7 7YH**